



# NVIDIA QUADRO SDI MERCURY TRANSMIT PLUGIN FOR ADOBE CS6

DU-06328-001\_v01 | May 2012

**User's Guide**



# DOCUMENT CHANGE HISTORY

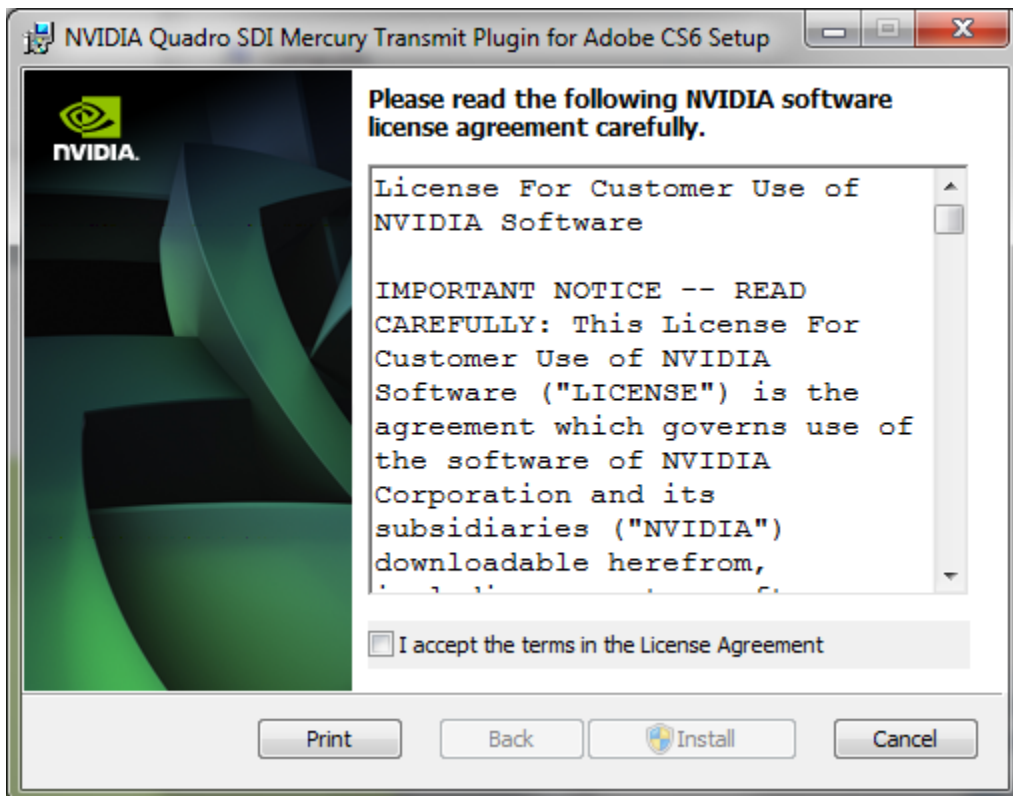
DU-06328-001\_v01

Version	Date	Authors	Description of Change
01	May 4, 2012	TT, SM	Initial Release

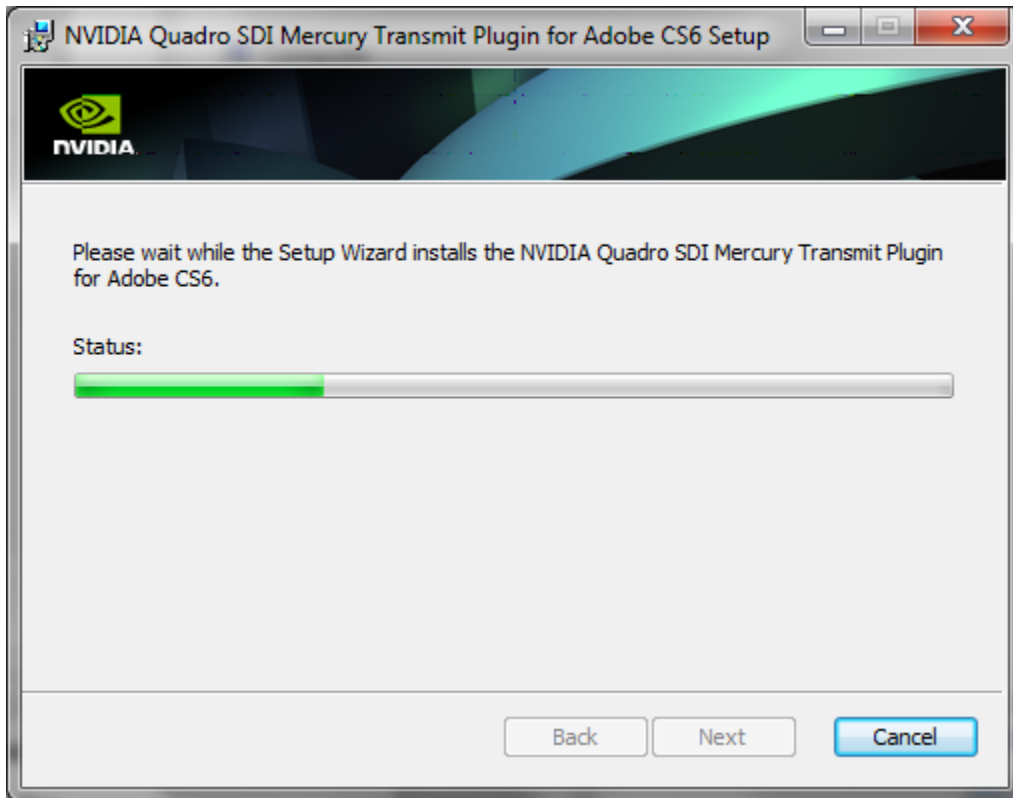
# INSTALLATION

The following steps will need to be performed in order to install the NVIDIA Quadro® SDI Mercury Transmit plugin for Adobe CS6

1. Double click on **NVIDIA Quadro Transmit Plugin Setup.msi** installer. The installer will then display the NVIDIA Software License Agreement.



2. Carefully read and then accept the terms of the NVIDIA Software License Agreement to continue the installation process.

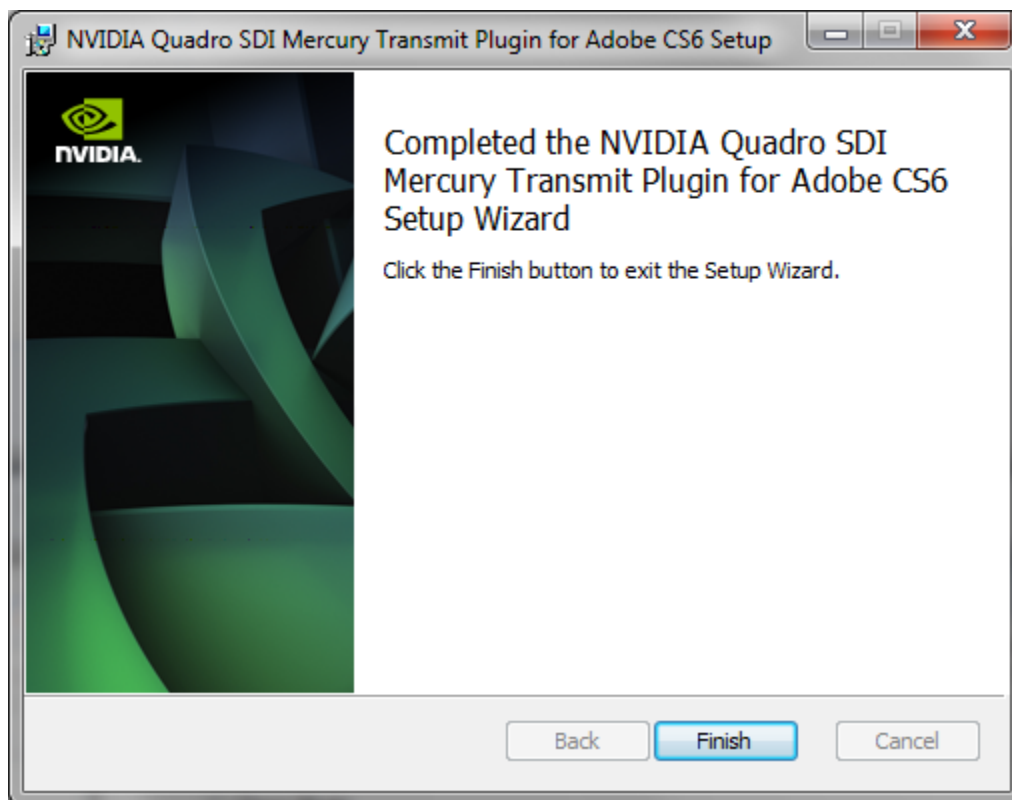


The installation process installs the plugin within an NVIDIA folder created in the Adobe CS plugin folder. This installation folder is typically:

C:\Program Files\Adobe\Common\Plug-ins\CS6\MediaCore\NVIDIA

- ▶ The installation places the following files into this folder:
- ▶ Plugin Image: **NVIDIA Quadro Transmit Plugin.prm**
- ▶ Release Notes: **ReadMe.txt**
- ▶ User Guide

3. Click on Finish once the installation is complete and the following message is displayed.

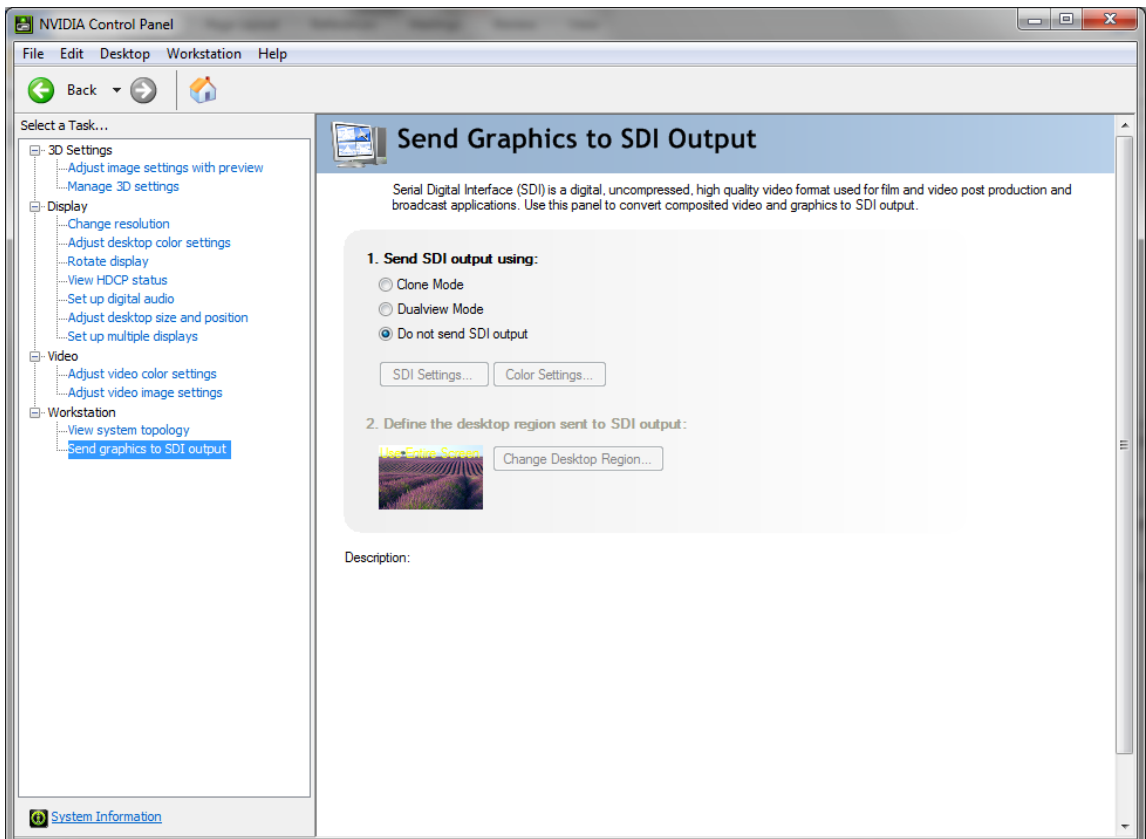


# SETUP

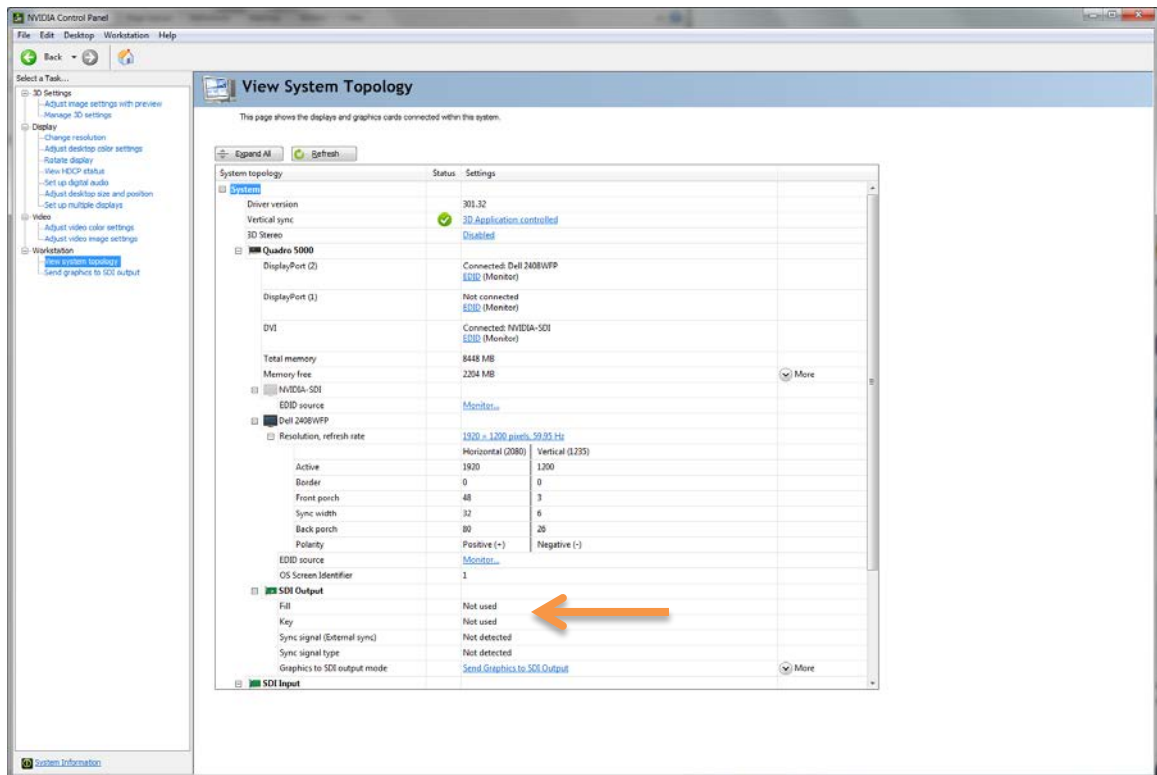
Install the NVIDIA® Quadro® SDI board and software driver as described in the *Quadro 4000/5000/6000 SDI User's Guide* (document number: DU-05337-001).

Next, ensure that the SDI output is disabled by opening the NVIDIA Control Panel.

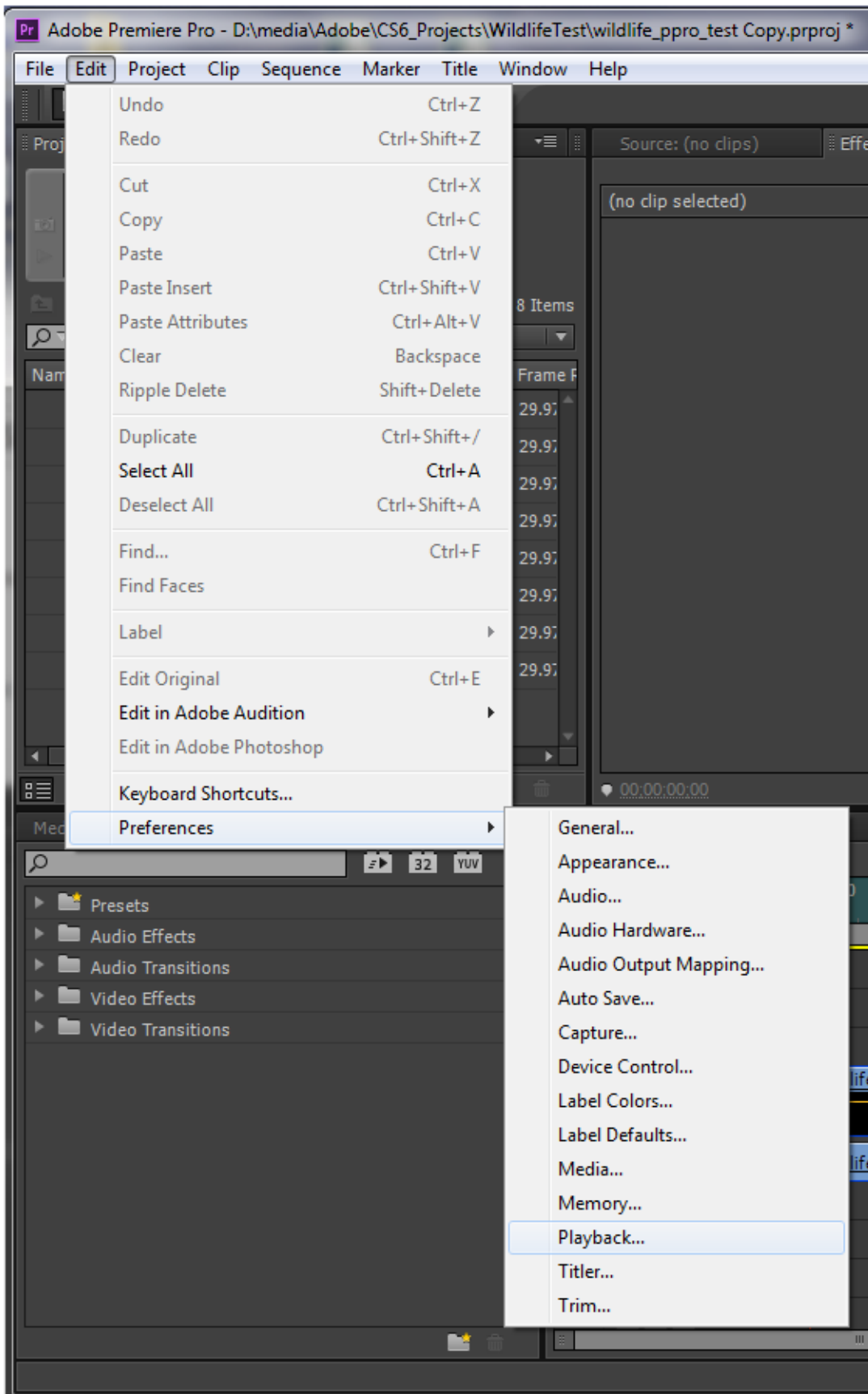
1. Right click on the desktop and select **NVIDIA Control Panel**.
2. Select the **Send graphics to SDI output** on the left side of the control panel.
3. Select the **Do not send SDI output** radio button (if it is not chosen already).



4. Open the **View System Topology** display window to verify that the SDI output is not being used.

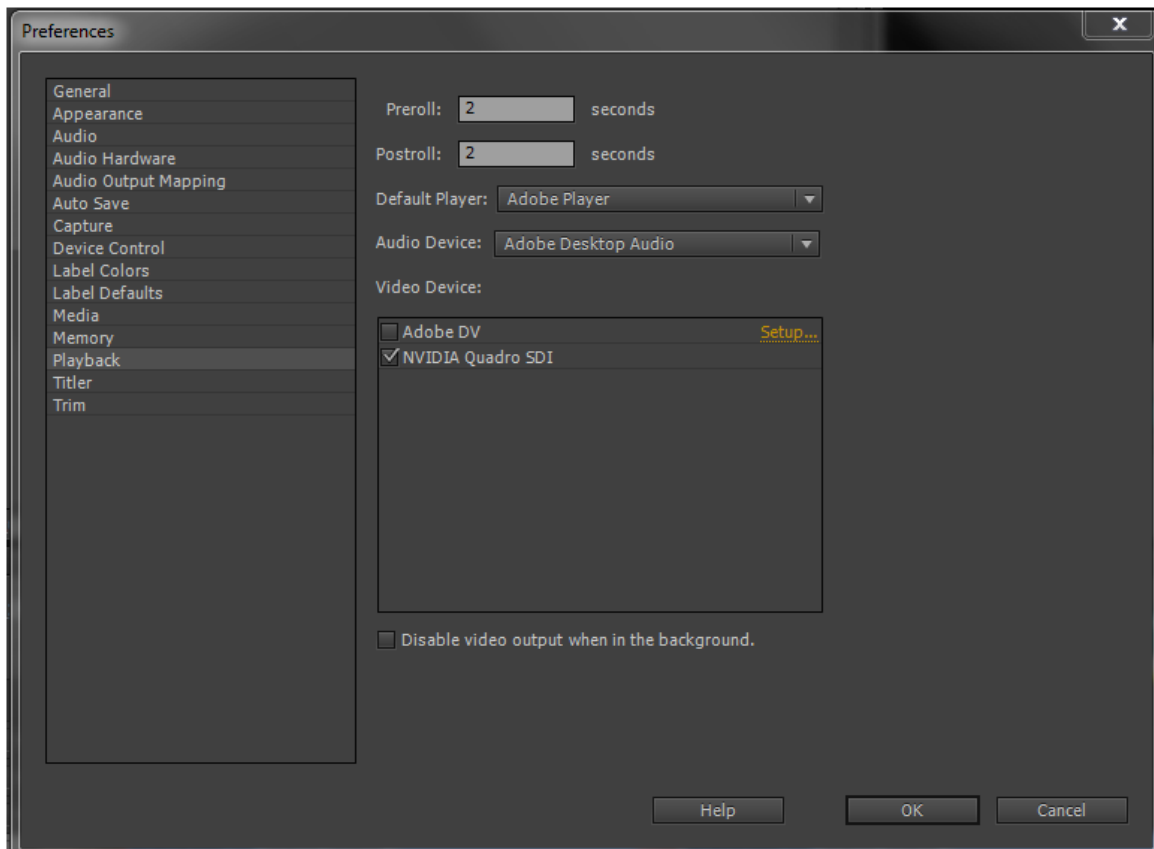


5. Start Adobe Premiere Pro CS6.
6. Select **Preferences** and then **Playback** from the Edit menu to enable NVIDIA Quadro SDI Out.





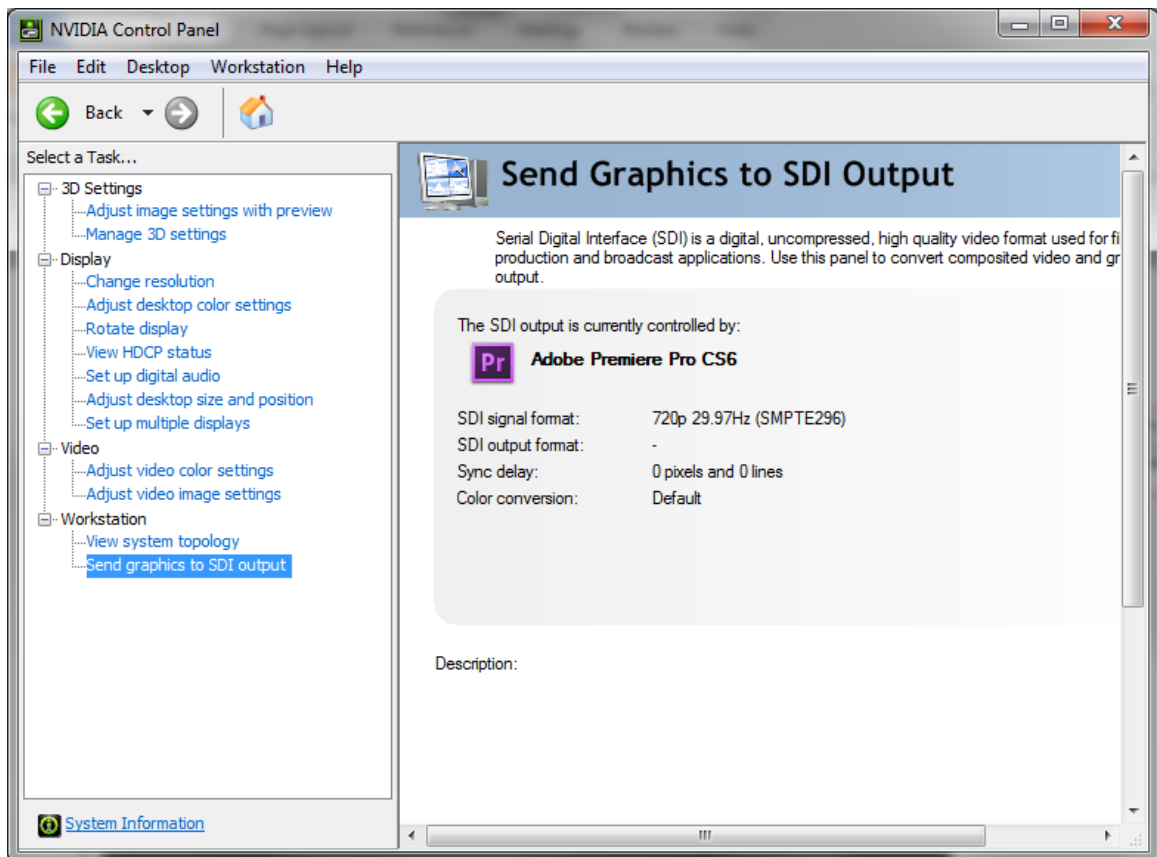
7. Check the box for **NVIDIA Quadro SDI** under **Video Devices**.



**Note:** Uncheck the **Disable video output when in the background** check box if you want to keep the SDI output playing even when Premiere Pro is iconified or loses the focus for keyboard and mouse input.

8. Right click on the desktop and select **NVIDIA Control Panel** to verify that the SDI output is active and in use by Adobe Premier Pro.

## 9. Select **Send graphics to SDI output**.



# OPERATION

Each sequence or source view creates a connection to the Quadro SDI Output board. When created, each instance uses the width, height and frame rate from the corresponding sequence settings or source properties to determine the SDI output signal format. When a user changes the focus between sequence and source views, the associated Transmit instances will deactivate and activate causing the signal format of the SDI output to change automatically.



**Note:** The SDI output may switch to a signal format that is unsupported by the SDI output device. The SDI output data format is always YCrCbA 4444.

## Notice

ALL NVIDIA DESIGN SPECIFICATIONS, REFERENCE BOARDS, FILES, DRAWINGS, DIAGNOSTICS, LISTS, AND OTHER DOCUMENTS (TOGETHER AND SEPARATELY, "MATERIALS") ARE BEING PROVIDED "AS IS." NVIDIA MAKES NO WARRANTIES, EXPRESSED, IMPLIED, STATUTORY, OR OTHERWISE WITH RESPECT TO THE MATERIALS, AND EXPRESSLY DISCLAIMS ALL IMPLIED WARRANTIES OF NONINFRINGEMENT, MERCHANTABILITY, AND FITNESS FOR A PARTICULAR PURPOSE.

Information furnished is believed to be accurate and reliable. However, NVIDIA Corporation assumes no responsibility for the consequences of use of such information or for any infringement of patents or other rights of third parties that may result from its use. No license is granted by implication of otherwise under any patent rights of NVIDIA Corporation. Specifications mentioned in this publication are subject to change without notice. This publication supersedes and replaces all other information previously supplied. NVIDIA Corporation products are not authorized as critical components in life support devices or systems without express written approval of NVIDIA Corporation.

## Trademarks

NVIDIA, the NVIDIA logo, and Quadro are trademarks and/or registered trademarks of NVIDIA Corporation in the U.S. and other countries. Other company and product names may be trademarks of the respective companies with which they are associated.

## Copyright

© 2012 NVIDIA Corporation. All rights reserved.